



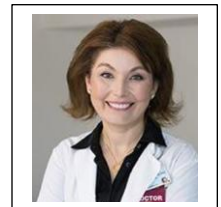
Understanding More about Disability Progression in MS

This MS educational program is Sponsored by: **sanofi**



Understanding More about Disability Progression in MS An MS Educational Event

MS Expert Speaker: Regina Berkovich, MD, PhD
Multiple Sclerosis Specialist



Topics: Focused on disability progression across the spectrum of MS, including:

- Learn more about signs and symptoms that may indicate disability progression in MS
- Understanding the clinical pathways that drive disability progression
- A deeper look at smoldering MS, Let's talk about it
- How to monitor and have a conversation with your doctor about disability progression and how to address it appropriately

45-minute discussion + 35-minute Q&A

Date: Saturday, August 23rd, 2025

10:40am PT –Check-in

11:30am PT – Program Begins

Complimentary Lunch

Location: Hilton Los Angeles Airport

5711 West Century Blvd – Los Angeles

[Google map](#)

Attendee Parking to be paid by MS Views and News

For In-person registration Please (RSVP) Online: <https://msviewsandnews.org/in-person-events/>

(When webpage opens, click the program relating to your region)

If you do not have internet, please call (888) 871-1664 - Ext 105

No Walk-ins will be permitted (as an advanced headcount is needed)

This MS Program is Sponsored by: **sanofi**

Exhibitors: **MS views & news**

Program provided by MS Views and News, a 501C3 not for profit organization

MS Views and News is MAKING a Positive IMPACT on those affected by Multiple Sclerosis

Updated 06.12.25

Event to end at approx 2:35pm

MS views & news