



MS Views and News invites you to

COMPASS TO MS CARE

REACHING RURAL AMERICA & BEYOND

Supported by:    

All attending must register in advance. Please read the program information shown below:

Understanding More about AGING in MS, Treatment Options & PT

Guest Speaker: Bianca Weinstock-Guttman, MD

Medical Director at Jacobs Multiple Sclerosis Center for Treatment, and Research at UBMD Neurology and Director of Pediatric MS Center of Buffalo



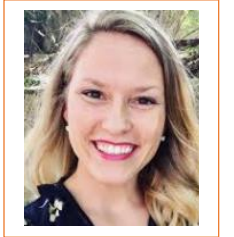
TOPICS:

- 1) Understanding more about Aging and MS. Are symptoms age related or MS?
- 2) Let's Learn More About Multiple Sclerosis. What's New?
- 3) How do I learn more about the Efficacious treatment options for Multiple Sclerosis?

50-minute discussion + 45 mins of Q&A

Plus: Guest Speaker Gretchen Hawley, DPT, PT

MS-Certified Specialist and Physical Therapist



TOPIC: Managing MS Symptoms & Exercise During Seasonal Changes

- a) How fluctuating temperatures during seasonal changes affect MS symptoms
- b) Indoor exercise adaptations during weather transitions
- c) Managing fatigue during the Hot Summer / and Winter months when mobility is limited

35-minute discussion + 20 mins of Q&A

Date: Saturday, June 21st, 2025

10:40am ET –Check-in

11:30am ET – Program Begins

Complimentary Lunch

Location: Hilton Garden Inn Buffalo Airport

4201 Genessee Street – Buffalo, NY 14225

[Google map](#)

For In-person registration Please (RSVP) Online: <https://msviewsandnews.org/in-person-events/>

(When webpage opens, click the program relating to your region)

If you do not have internet, please call (888) 871-1664 - Ext 105

No Walk-ins will be permitted (as an advanced headcount is needed)

Exhibitors:  





Program provided by MS Views and News, a 501C3 not for profit organization
MS Views and News is MAKING a Positive IMPACT on those affected by Multiple Sclerosis